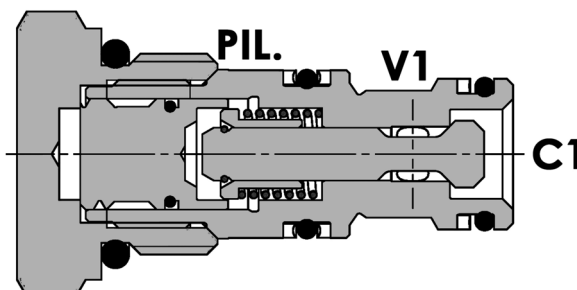
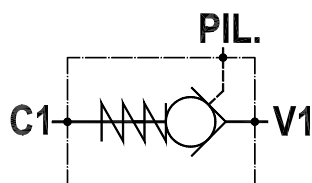


Valvola di blocco pilotata semplice, versione cartuccia, cavità SAE
Single pilot operated check valve, cartridge version, SAE cavity

Rev.01-2010/02



SPECIFICHE TECNICHE

Materiali: corpo in acciaio. L'otturatore conico guidato è in acciaio trattato termicamente. La superficie esterna è protetta mediante zincatura.

Portata: fino a 70 l/min

Pressione max.: 350 bar

Pressione di apertura: standard 2,5 bar, 5 bar su richiesta

TECHNICAL SPECIFICATIONS

Materials: body is steel made. Guided poppet is in hardened steel. External surface is zinc plated.

Rated flow: up to 70 l/min

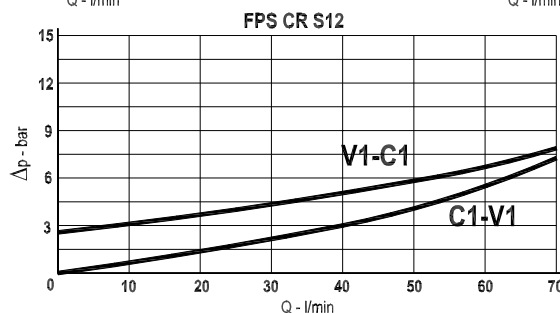
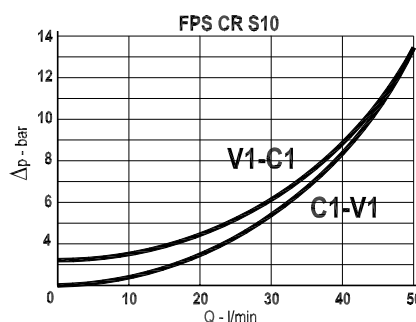
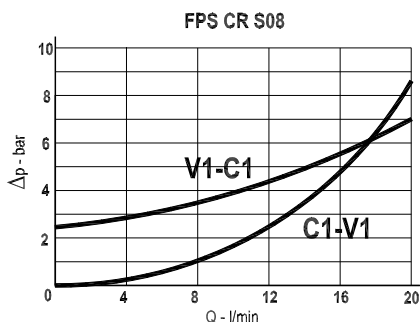
Max. pressure: 350 bar

Cracking pressure: 2,5 bar standard, 5 bar on request

DIAGRAMMA PERDITE DI CARICO - PRESSURE DROP CURVES

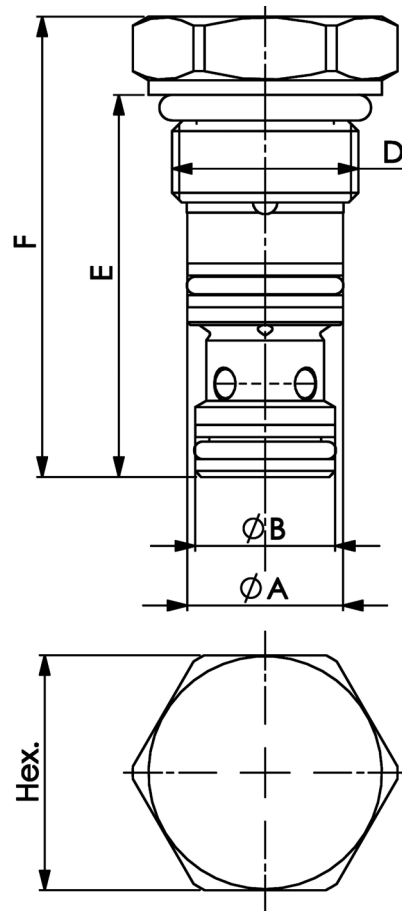
Viscosità olio 24 mm²/sec. (3,5 °E)
 Temperatura 50 °C

Oil viscosity 24 mm²/sec. (3,5 °E)
 Temperature 50 °C



Valvola di blocco pilotata semplice, versione cartuccia, cavità SAE
Single pilot operated check valve, cartridge version, SAE cavity

Rev.01-2010/02



TIPO TYPE	PORTATA MAX. FLOW	PRESS. MAX. MAX PRESSURE	A	B	D	E	F	HEX	CAVITA' CAVITY	COPPIA DI SERRAGGIO INSTALLATION TORQUE	RAPP. DI PILOTAGGIO PILOT RATIO	PESO WEIGHT
	L/MIN	BAR	UNF-2B	mm	UNF-2B	mm	mm	mm		Nm		Kg
FPS CR S08	20	350	15.87	14.27	3/4"-16	39	47	24	33082	40-45	1 : 4	0.074
FPS CR S10	50	350	19.05	17.47	7/8"-14	47.5	56	27	33102	60-70	1 : 3.4	0.115
FPS CR S12	70	350	23.80	22.22	1 1/16"-12	58.5	69.5	32	33122	90-100	1 : 3	0.222

ESEMPIO DI ORDINAZIONE - ORDERING CODE EXAMPLE

F P S C R S 1 0 2 , 5 G *

S08 - 3/4"-16 UNF-2B
 * S10 - 7/8"-14 UNF-2B
 S12 - 1 1/16"-12 UNF-2B

Cracking pressure, omit if standard

2.5 bar (std)

* 5 bar

Pressione apertura ritegno, omettere se std
 Cracking pressure, omit if standard

Guarnizioni - Seals:

V=Viton *

Omettere se BUNA-N - Omit if BUNA-N

Guarnizione sul pilota, omettere se non richiesta *

With o-ring on pilot valve, omit if not requested